

## Product Summary 28 - Terminals and Draught Divertors

19 Sep 2020

All purpose multifuel anti down draught cowls, Spinning Terminals and Draught Divertors.

Midtherm produce a range of terminals and draught divertors. AD cowls and H cowls are fitted to oil gas and solid fuel systems, to improve flue conditions and therefore the firing and burning efficiency of the appliance. Air turbulence caused by local climatic conditions, ground contours, proximity of trees and buildings can be reduced by either cowl.

Available in diameters from 125 to 350 mm - Stocked in sizes from 125 to 200 mm

Maximum operating temperature 0 deg C

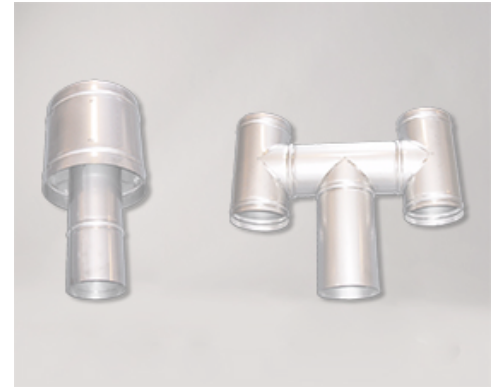
Standard finish is: Stainless Steel

(All products can be powder coated to any BS or RAL colour code)

1 year manufacturer's warranty for all products installed and maintained in accordance with the installation and usage notes.

Suitable for the following Applications:

Ventilation and Extract, Gas, Oil, Solid Fuel, Pellet, Biomass, Condensing,



### Notes:

All information is correct at 19 Sep 2020 and subject to change without notice.

All flue system installations, i.e. oil, gas, solid and multi fuel, should be carried out by a suitably qualified installer or Building Control Department permission must be granted. For detailed installation guidelines please refer to: The relevant Te

